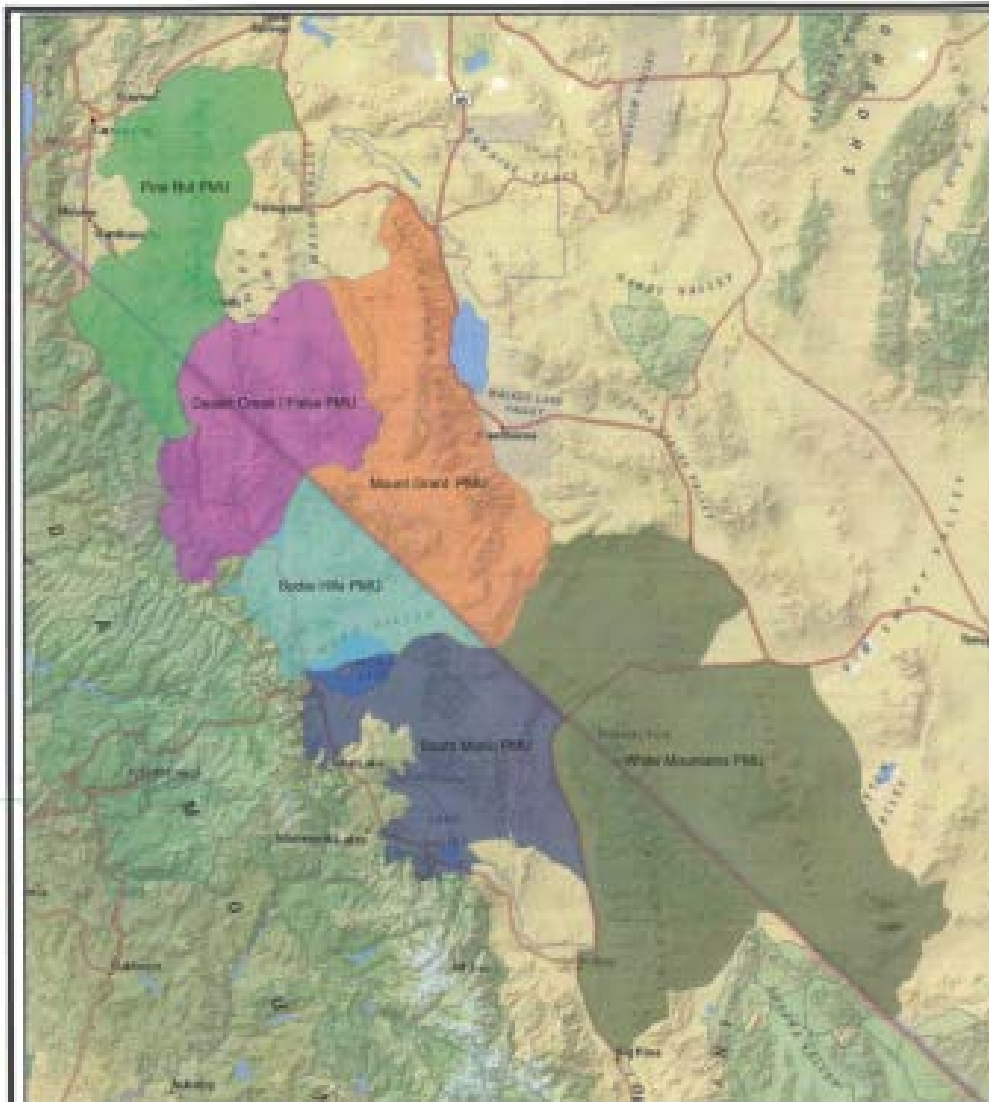


# Nevada NRCS Bi-State Sage Grouse Accomplishments & Plans



SGI started in 2010



**Figure 1**  
**General Location of Population Management Units (PMU)**  
 Bi-State 2012 Action Plan



# Implementing the Bi-State Action Plan:

## March 2010-September 2013:

Over \$21 million invested in Sage Grouse conservation in the Bi-State, so far:

Year	EQIP	WHIP	GRP	WRP	FRPP*	Total SGI \$
2010	\$119,778	\$36,209	-----	-----	-----	\$155,988
2011	\$430,294	\$90,353	-----	-----	-----	\$520,647
2012	\$234,642	\$31,367	\$2,218,565	\$278,400	\$6,400,000	\$9,162,974
2013	\$303,447	\$47,492	\$9,570,557	\$0	\$1,240,000	\$11,161,496
<b>Totals</b>	<b>\$1,088,161</b>	<b>\$205,421</b>	<b>\$11,789,122</b>	<b>\$278,400</b>	<b>\$7,640,000</b>	<b>\$21,001,104</b>

\*FRPP Easement funding includes Partnership dollars.

# Implementation Continued...

- 4 Shared Positions-nearly \$500,000 invested
- EOC
- Bi-State Technical Team
- Bi-State LAWG
- PMU leaders
- Organizing field trips
- Public Outreach





# Conservation Easements

- The Bi-State landowners voluntarily enrolling land in SGI Conservation Easements enter into legally binding agreements removing the land development rights, while agreeing to manage their land in a manner that is beneficial to Sage-grouse.
- Nevada=~11,752 acres of applications for easement protection
- California=~7,439 acres of applications for easement protection
- At least 5,000 additional acres where the landowners are interested, but haven't applied yet.
- Easements help maintain sustainable ranching.
- Easement dollars go back into our communities and economy!



# 2013 SGI Summary of Bi-State Easements:

- ❖ A **Permanent 718 acre California FRPP easement** was completed in the Fales portion of the Desert Creek PMU. A partnership match provided by Eastern Sierra Land Trust (ESLT) completed this easement & they hold the easement.
- ❖ A **30-year, 192 acre California WRP easement** was obligated in the Bodie PMU. NRCS will hold the easement and is working to complete the easement by December 2013.
- ❖ A **Permanent 4,069 acre Nevada FRPP easement** was obligated for \$10 million in the Desert Creek and Pine Nut PMUs with a partnership match provided by TNC and NDOW. This ranch is in the process of being donated to TNC, therefore, NRCS is no longer required to provide funding.
- ❖ A **Permanent 711 acre Nevada GRP easement** was completed in the Desert Creek PMU. NRCS holds this easement.
- ❖ A **Permanent 3,444 acre Nevada GRP easement** was obligated in the Desert Creek PMU. NRCS will hold the easement, which should be completed by June 2014.
- ❖ A **Permanent 1,012 acre Nevada GRP easement** was obligated in the Desert Creek PMU. NRCS will hold the easement, which should be completed by June 2014.
- ❖ A **Permanent 2,036 acre California GRP easement** was obligated in the Bodie Hills PMU. NRCS will hold the easement, which should be completed by June 2014.
- ❖ A **Permanent 1,240 acre California FRPP easement** was obligated in the Bodie Hills. A partnership match provided by ESLT will complete this easement & they will hold the easement.
- ❖ Additional NRCS SGI and cooperative easement projects are being developed, but at this time no funding has been allocated toward the acquisition of those easements.

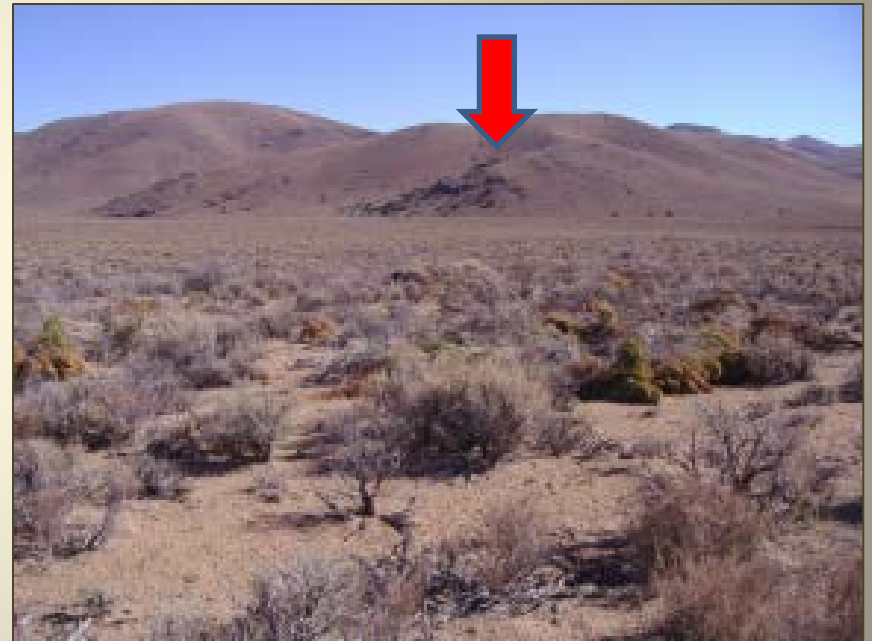
NRCS Easement Dollars = \$12,712,522 Partnership Easement Dollars = \$6,895,000 Acres = 13,422

# Pinyon-Juniper Removal

**BEFORE:**



**AFTER:**



3,174 acres of encroached conifer removed on Private & Public Lands since 2010 within the Bi-State area with an additional 1,101+ acres planned.

# Livestock Management

- Grazing Plans
- Watering Facilities
- Fencing





# Fence Markers & Fence Removal

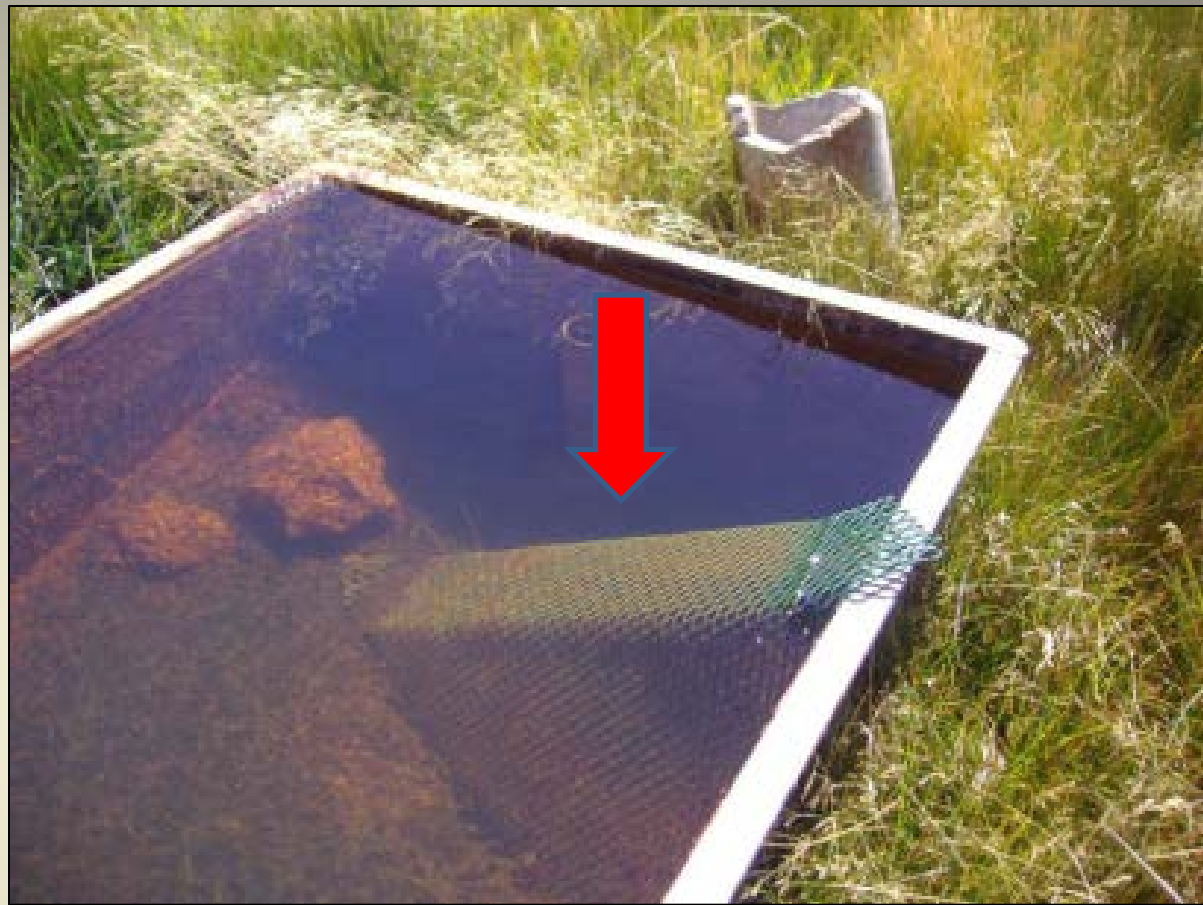
14.3 miles of fence markers installed with an additional 3.5+ miles planned for installation in 2014.

Working with various partners to get many, many more miles installed in 2014 without using landowner contracts.



1.9 miles of fence removed in the Pine Nut PMU in 2012; 3 miles removed in 2013 in the Bodie PMU.





## ESCAPE RAMPS

Watering facilities with escape ramps cut down on wildlife mortality. All new NRCS troughs are required to have escape ramps.



# Riparian/Meadow Improvements

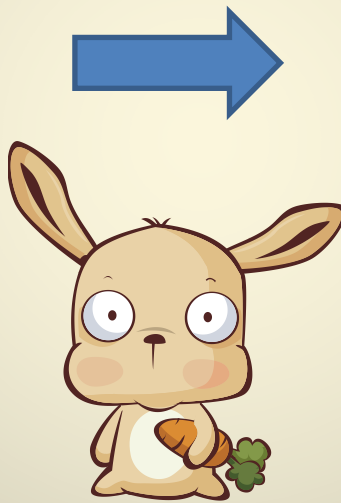
- Iris Control
  - Weed Control
  - Brush Management
  - Fencing-removal & riparian exclosures
  - Grazing Plans
  - ~1,225 acres of meadow restoration, including rabbitbrush removal.
- 

# Rabbitbrush Removal

**BEFORE:**



**AFTER:**



# Miscellaneous:

- Spring Improvements/Developments
- Re-seeding After Fires
- 7,922 acres of prescribed grazing planned to benefit Sage-grouse with an additional 8,637 acres currently being planned with Bi-State landowners.
- \$800,000 for SG genetics across the west
- Conservation Plans
- Technical Assistance



# Programs Available

- EQIP
- EQIP
- WHIP/WLFW
- GRP\*
- WRP\*
- FRPP\*



# How helping Sage Grouse helps others:

- Improved rangelands/grazing
- Habitat improvement & protection for multiple other wildlife species
- Increased water availability
- Decreased hazards with fence removal & marking





**NRCS cannot  
succeed without  
partnerships!**

“NRCS  
ROCKS!”



**Thank You!**

